



## NWT SPECIES AT RISK

**Canadian toad**

**Western toad**

**Northern leopard frog**

**UPCOMING ASSESSMENT: APRIL 2025**

### CURRENT STATUS IN THE NWT:

**Threatened** – Northern leopard frog and western toad

**No status** – Canadian toad

A multi-species status report is currently available for review until **December 15, 2024**.

[!\[\]\(cf531ed27e91483460120fcc057b3901\_img.jpg\) \*\*CLICK HERE\*\*](#)

**to read the draft amphibians status report**



NORTHWEST TERRITORIES  
**SPECIES  
AT RISK**  
COMMITTEE

## DO YOU HAVE KNOWLEDGE TO SHARE?

### POPULATION

- How often do you see these species out on the land compared to the past (more, less, same)?
- What are people saying about these changes?

### DISTRIBUTION

- Are these species still observed in all the places they were in the past? Have they disappeared from areas where they used to be? Are they found in new areas?
- Are these changes considered normal or unusual for these species? Could these species have gone elsewhere?
- What are people saying about these changes?

### HABITAT

- How healthy is the habitat where these species live?
- How has the amount of habitat changed over time? Is there more, less, or the same?
- Have certain areas dried out or become more wet compared to the past? Have there been any changes in the time of year when things are wet or dry?

### THREATS

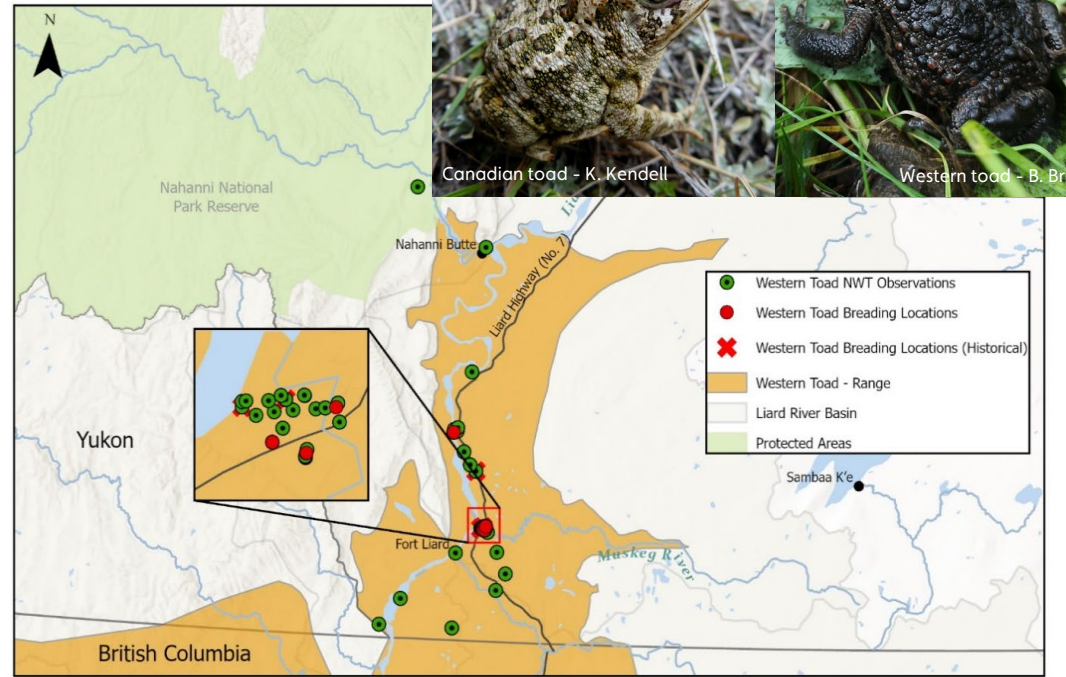
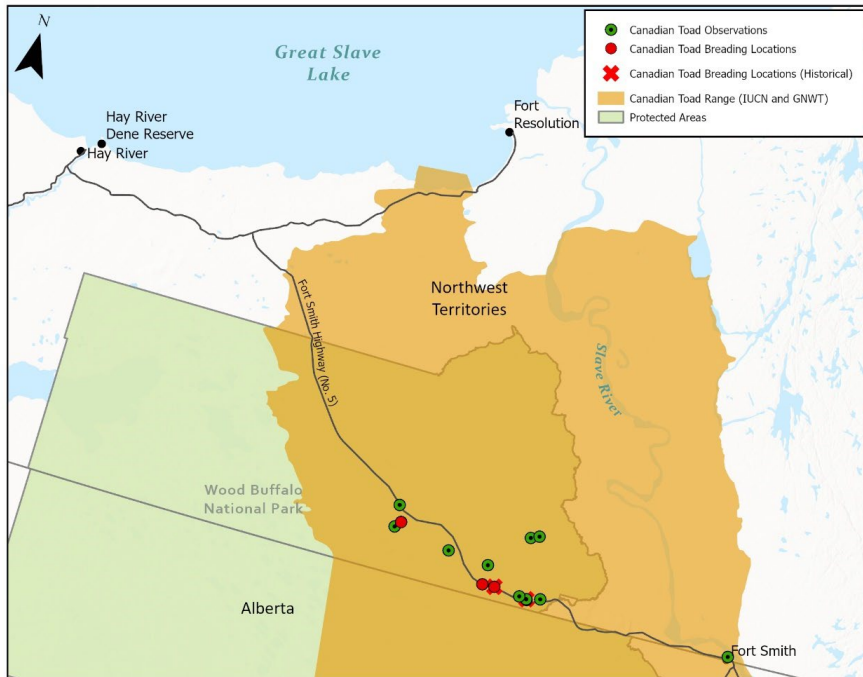
- How sensitive are these species to natural or human-caused threats?
- What specific threats are known to impact these species in the NWT?
- How concerned are people about these threats?

### RELATIONSHIPS

- Have changes to these species or their habitat affected your traditional ways of life?
- Have cultural connections to these species changed? If so, how?
- Are you or people in your community concerned about the future of these species in the NWT? Why or why not?



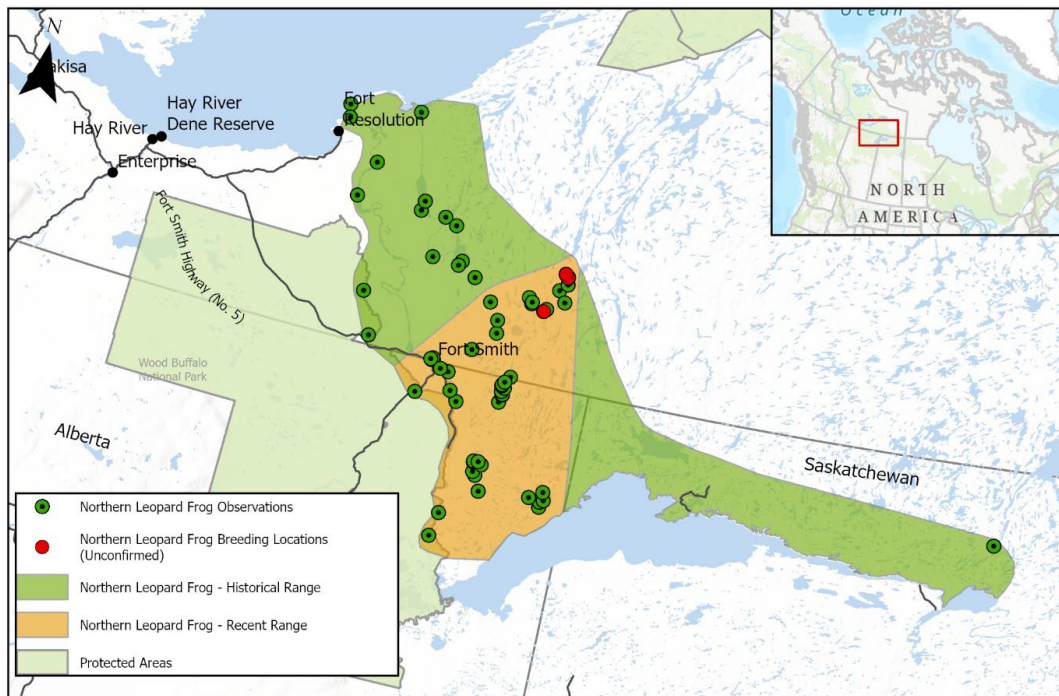
Current known ranges in the Northwest Territories and approximate breeding locations of **Canadian toad** (top left), **western toad** (top right) and **northern leopard frog** (bottom left)



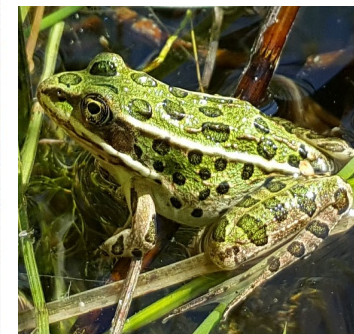
Canadian toad - K. Kendall



Western toad - B. Brunen



Maps from **Draft Multi-Species Status Report for Canadian Toad (*Anaxyrus hemiophrys*), Western Toad (*Anaxyrus boreas*) and Northern Leopard Frog (*Lithobates pipiens*) in the Northwest Territories** - courtesy N. Wilson, ECC-GNWT.



Northern leopard frog - The Wilder Institute

**DO YOU HAVE KNOWLEDGE TO SHARE?**

**NWT Species at Risk Secretariat**

PO Box 1320

Yellowknife, NT, X1A 2L9

Toll-free: 1 (855) 783-4301

Fax: (867) 873-0293

Email: SARA@gov.nt.ca

[www.nwt-speciesatrisk.ca](http://www.nwt-speciesatrisk.ca)

